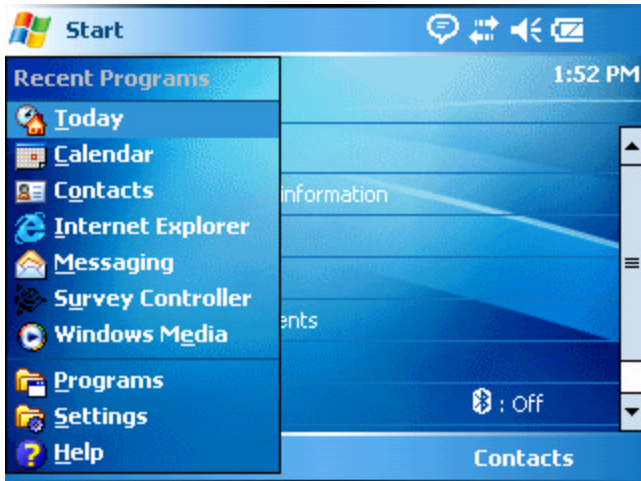


Configure Enfora Compact Flash Card (Cingular Data Plan)

Source: Jim McLeFresh, Spokane County Public Works

1. Install SIM Card into Enfora WeiTel MDM-E0110-01 Compact Flash Card.
2. From Start Menu, go to “Settings”.



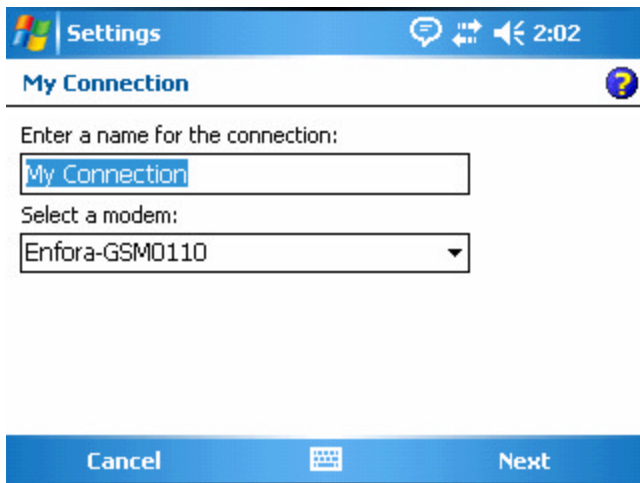
3. In Settings, tab the “Connections” button, found on bottom of the screen. Double click “Connections.”



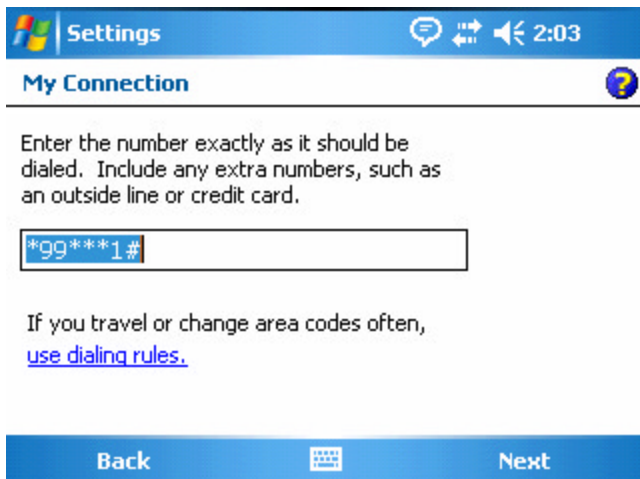
4. Under My ISP, click “Add a new modem connection.”



5. Name the connection and select Enfora-GSM0110, as the modem type. Tap “Next.”



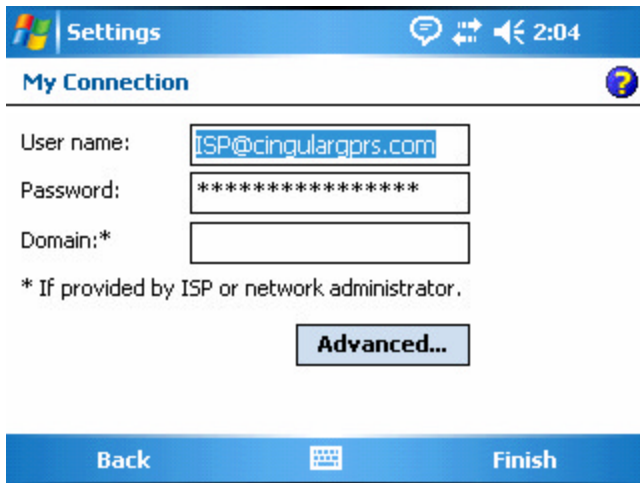
6. Enter *99***1#, for the number to dial. Tap “Next.”



7. Username: ISP@cingulargprs.com

Password: CINGULAR1

Tap "Advanced"

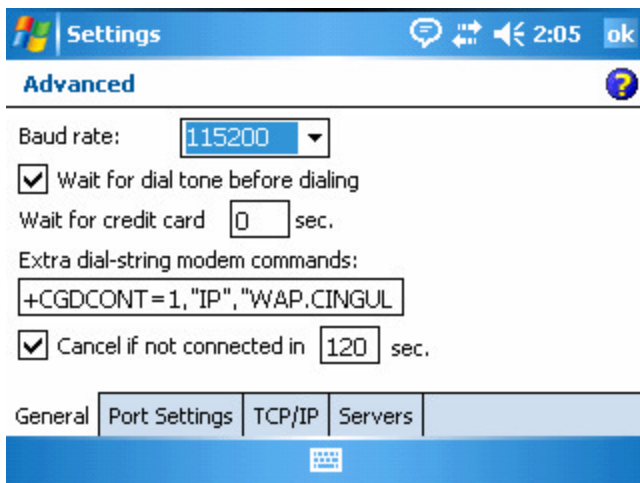


The screenshot shows the 'My Connection' settings screen. At the top, there is a status bar with the Windows logo, the word 'Settings', and icons for messages, network, and volume, along with the time 2:04. Below the status bar, the title 'My Connection' is displayed. The main area contains three input fields: 'User name:' with the text 'ISP@cingulargprs.com', 'Password:' with a masked password '*****', and 'Domain:*' which is empty. A note below the fields reads '* If provided by ISP or network administrator.' At the bottom of the main area is a button labeled 'Advanced...'. Below the main area is a navigation bar with 'Back' and 'Finish' buttons, and a keyboard icon.

8. Baud Rate: 115200

Extra dial-string modem commands: +CGDCONT=1, "IP", "WAP.CINGULAR"

Tap "OK" and "Finish"

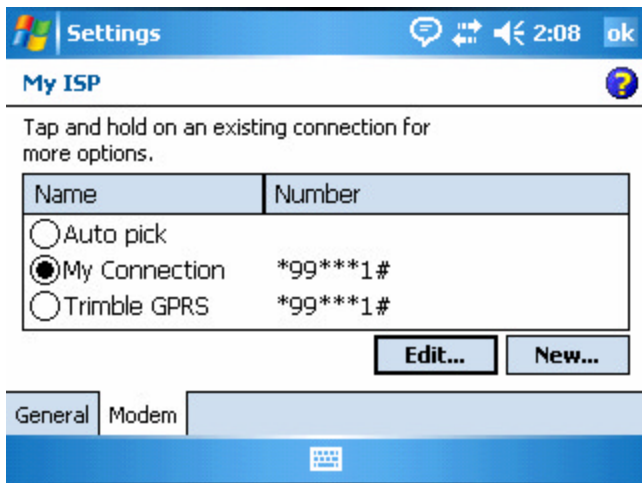


The screenshot shows the 'Advanced' settings screen. At the top, there is a status bar with the Windows logo, the word 'Settings', and icons for messages, network, and volume, along with the time 2:05 and an 'ok' button. Below the status bar, the title 'Advanced' is displayed. The main area contains several settings: 'Baud rate:' with a dropdown menu set to '115200', a checked checkbox for 'Wait for dial tone before dialing', 'Wait for credit card' with a text input field set to '0' and 'sec.', 'Extra dial-string modem commands:' with a text input field containing '+CGDCONT=1, "IP", "WAP.CINGUL', and a checked checkbox for 'Cancel if not connected in' with a text input field set to '120' and 'sec.'. At the bottom, there is a tabbed interface with 'General', 'Port Settings', 'TCP/IP', and 'Servers' tabs. Below the tabs is a keyboard icon.

9. To check connection, under My ISP, click “Manage existing connections”



10. Tap and hold the connection you created. A box will prompt “delete,” or “connect”. Tap “connect”



If the connection *does* establish, the connection box will go away.

If the connection *does not* establish, the connection box will prompt you. In this case, try again. If further problems arise, contact your singular representative.