

Audiovox TSC2 Setup

There are 2 differences when using the Audiovox card with the previous Pocket PC 2003 OS and the new WM (Windows Mobile) 5.0.2 OS on the TSC2:

1. When using Pocket PC 03 there were drivers to install (*.cab) files from the Audiovox 8000D CD; with Windows Mobile 5.0.2 there are no drivers needed.
2. Pocket PC 03 allowed the user to start a GPRS connection from the “Main screen” by selecting the tower icon “1”, Windows Mobile 5.0.2 does not offer this option so the user will need to:
 - a. Insert the Audiovox 8000D card into one of the Compact Flash (CF) ports on the TSC2
 - b. Go to Start/Settings and select the Connections tab and tap Connections.



- c. Next select My ISP and Add a New Modem



- d. Under the Make New Connection dialog enter a name for the connection and select GPRS_Modem.

Settings

Make New Connection

Enter a name for the connection:

T-Mobile

Select a modem:

GPRS_Modem

Cancel Next

- e. For T-Mobile enter *99# for the phone number to be dialed.

Settings

T-Mobile

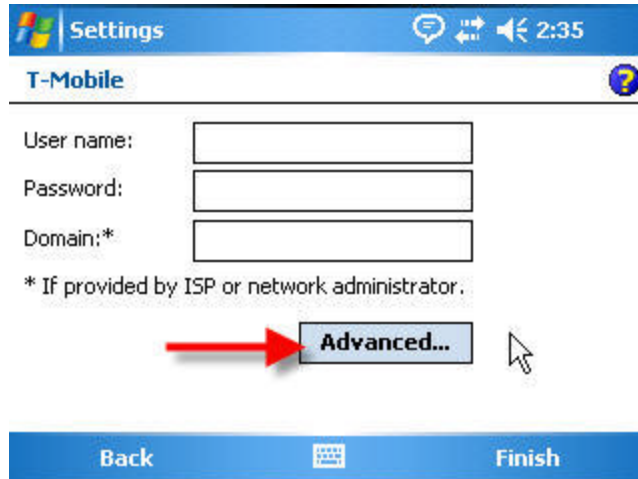
Enter the number exactly as it should be dialed. Include any extra numbers, such as an outside line or credit card.

*99#

If you travel or change area codes often, [use dialing rules.](#)

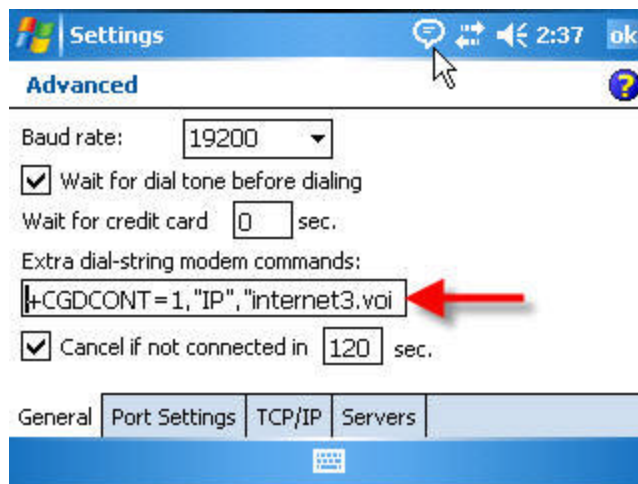
Back Next

- f. T-Mobile does not require a User name, Password and Domain. Tap on the Advanced tab next.

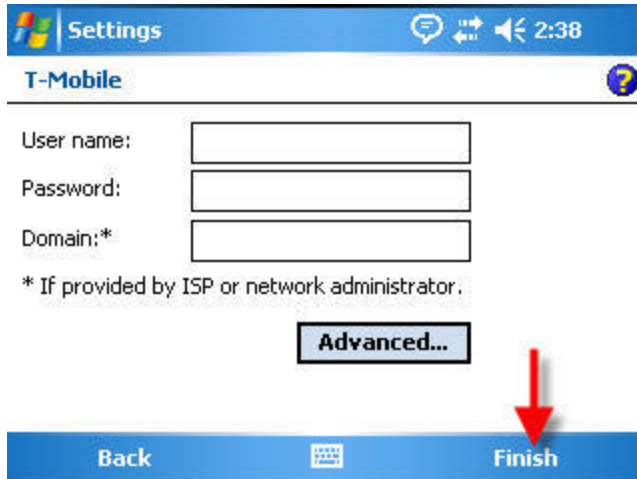


- g. The only setting to be entered is the Extra dial-string modem commands. For T-Mobile enter `+CGDCONT=1,"IP","internet2.voicestream.com"` and tap ok.

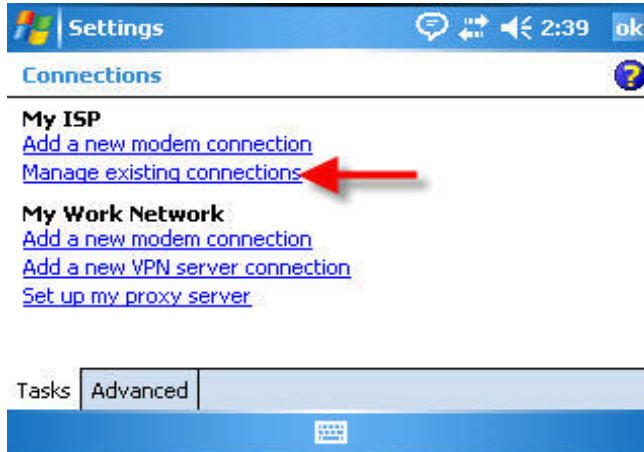
INTERNET2.... 2 REPRESENTS OUR REGION IN THE North East



- h. Back at the settings dialog tap Finish



- i. In the connections dialog select the new Manage existing connections



- j. Tap and hold on the new connection and select connect. You will now be able to connect to the internet, start a roving session using VRS etc. This step is only necessary once. This connection will now be available in SCS900 (Settings/Internet Connection Settings) just as in previous versions.

