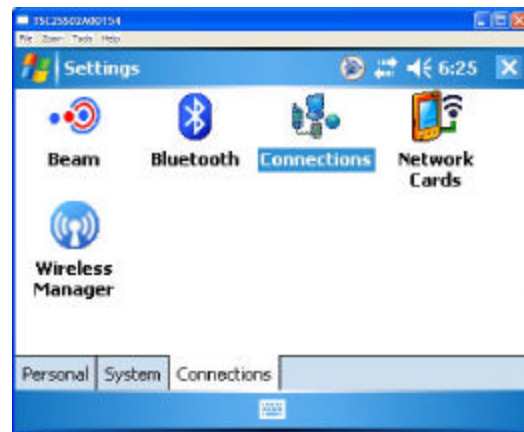


TMobil Settings for TSC2



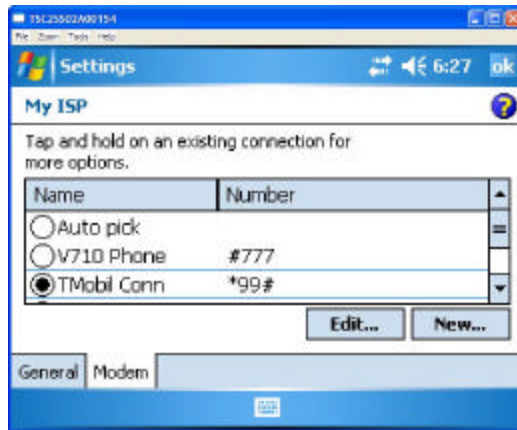
Tap on connection manager



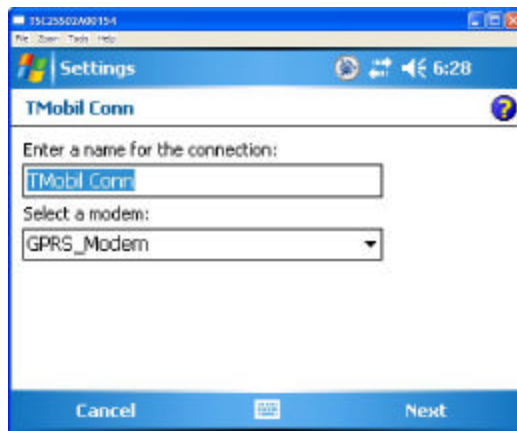
Tap on Connections



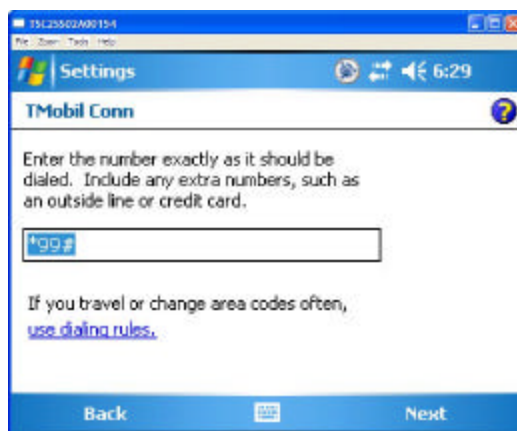
Pick Manager Existing Connections



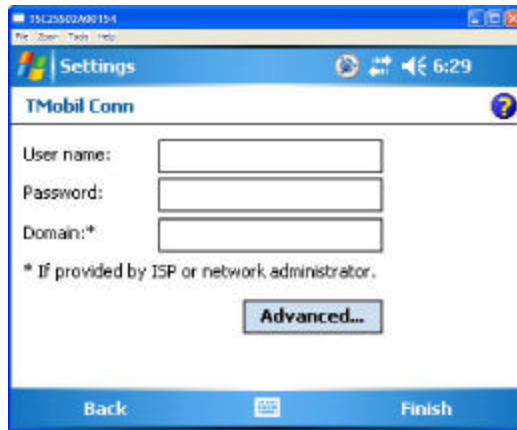
Pick New



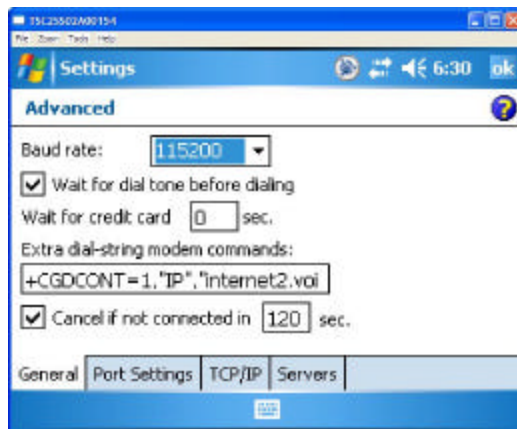
Enter TMobile Conn for Connection Name



Enter Number to dial for TMobile Data Service



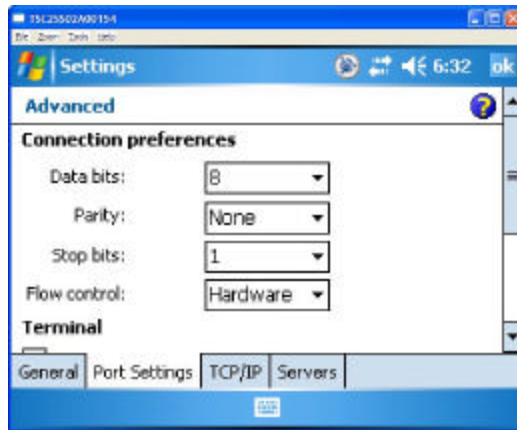
No information needs to be entered here
Pick Advanced



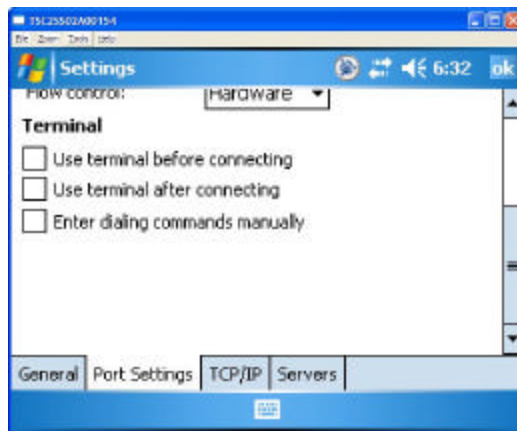
Set Baud Rate to: 115200
Enter +CGDCONT=1,"IP","internet2.voicestream.com"



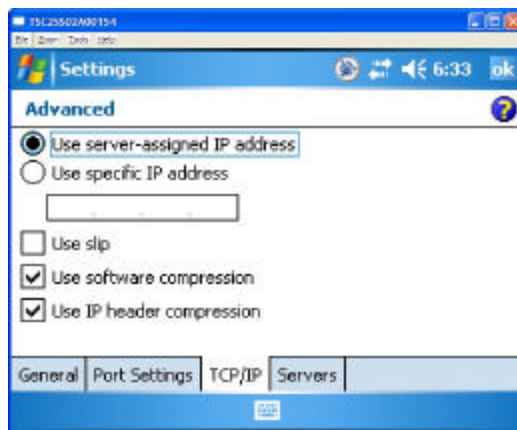
Leave other settings alone



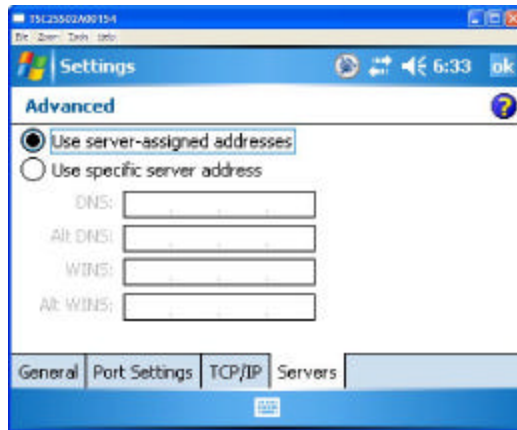
Leave all settings at their default setting



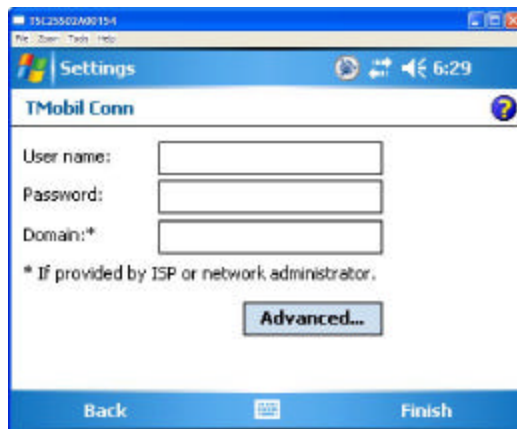
Leave all settings at their default setting



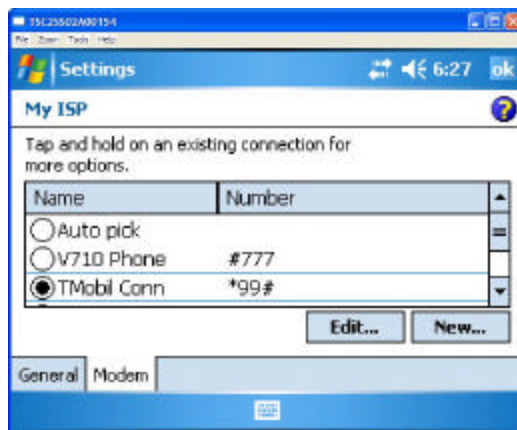
Leave all settings at their default setting



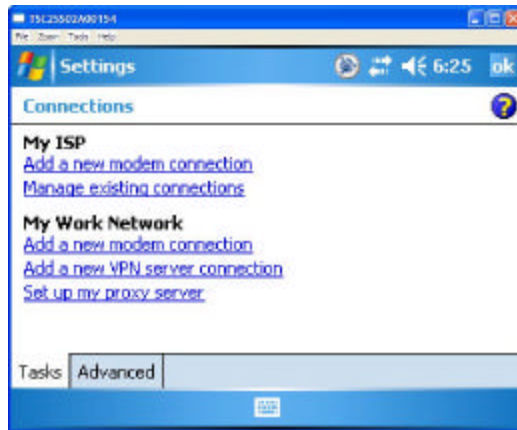
Leave all settings at their default setting
Pick OK top right corner



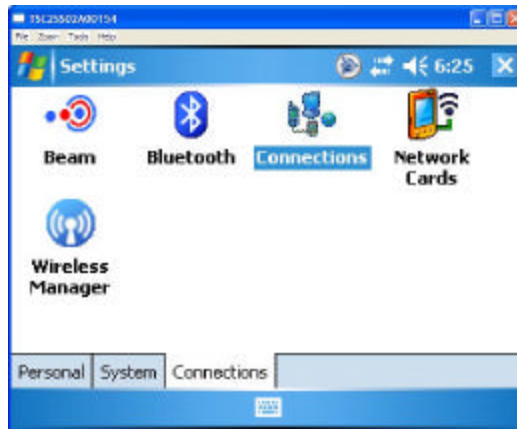
Pick Finish bottom right corner



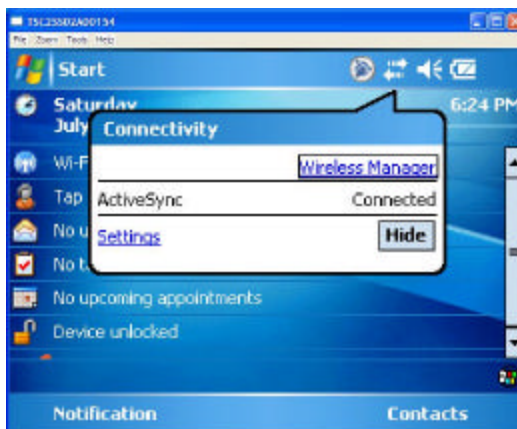
Pick OK top right corner



Pick OK top right corner



Pick X top right corner



You are done!