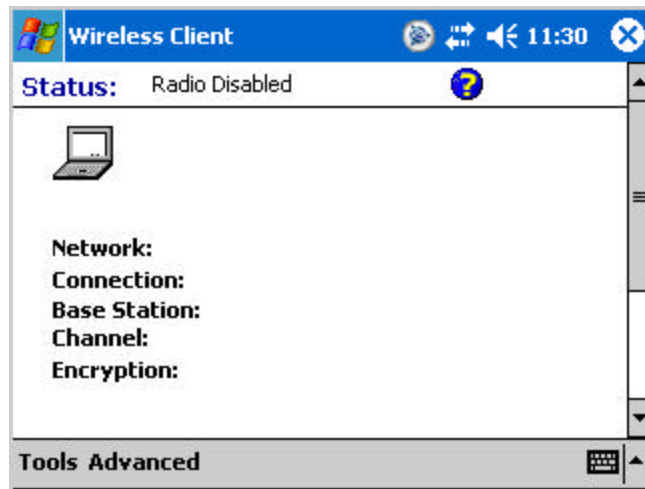
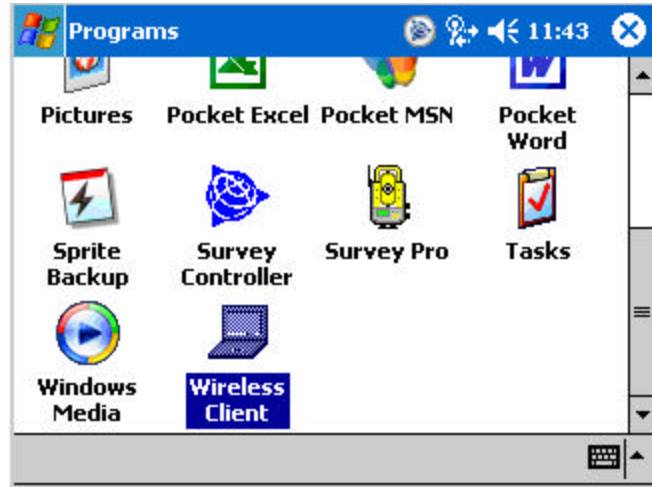


Accessing Wireless Networks with the TSC2

Think of it as a direct line from the huddle to the coach: Now you can access the Internet or a wireless network using your TSC2. Here's how:

Check that the WiFi radio is enabled on the TSC2

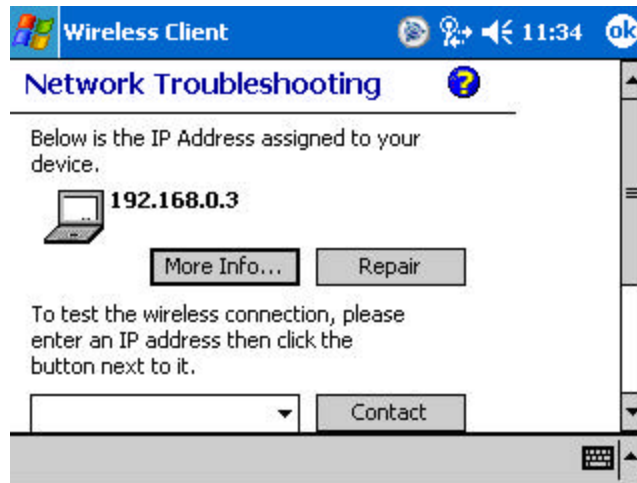


To enable the radio, select the "Enable Radio" option from the Tool menu.



If your wireless network is WEP-enabled (Wireless Encryption Protocol), you will be prompted to enter a Network Key. You may need to contact your network administrator to get key details. Once you are connected to the wireless network, you may be prompted for your network login information, e.g., username, password and domain.

To find the IP address assigned to your TSC2 and to check the connection, go to "Network Troubleshooting" in the advanced menu.



Your TSC2 is now online and ready to provide access to the Internet.
You can test your connection by opening Internet Explorer and typing in the address: www.trimble.com.

