

Step by step procedure for TopSURV/GMS-2 for Network DGPS:

I.

Establishing the Bluetooth connection with your Bluetooth enabled cell-phone  
Kindly note the settings on the BT Manager screens.

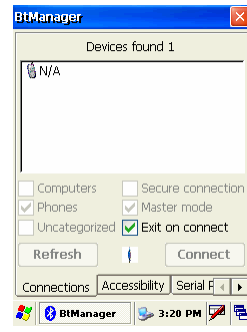


Fig. 1

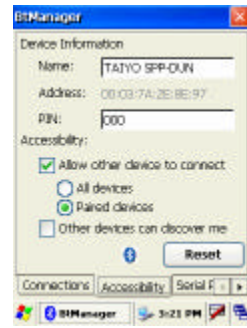


Fig. 2

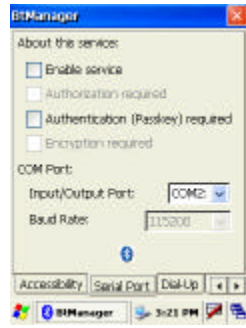


Fig. 3

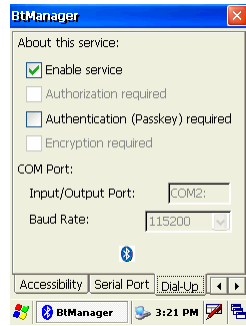


Fig. 4



Fig. 5

Once you have the settings as above, click 'Connect' on the 'Connections' tab (Fig. 1). You will receive a prompt from the cell-phone whether a bonding is needed. Click 'Yes' and enter the 'Authentication Passkey' on the next prompt. This passkey is shown in the 'PIN' field on the 'Accessibility' tab (Fig. 2). The connection is made and the blue LED lights up on the GMS-2.

## II.

Next load the 'Network and dial-up connections' from under the 'Control Panel' on the device.

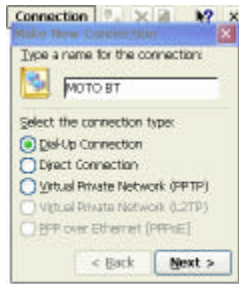


Fig. 6  
Create a new 'Dial-up' connection. Click 'Next'.

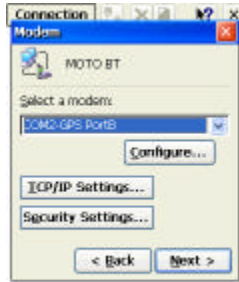


Fig. 7  
Enter the same COMM port which was selected in the 'BT Manager'. In Fig. 3, I had established the BT connection from COMM2. Click 'Configure'.

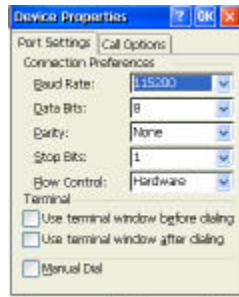


Fig. 8

The 'baud rate' needs to be changed to 115200. Click the 'Ok' button next.

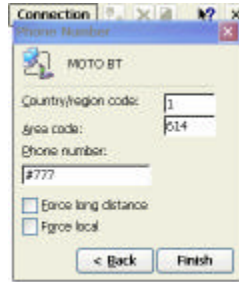


Fig. 9

Next enter the 'Area Code' and 'Phone number' from the 'Phone number' tab.

Click 'Ok'. Next double-click on the short-cut created for the new dial-up connection. Fig. 10 shows how the 'Connect' screen will appear.



Fig. 10

Click on 'Dial Properties' to make the changes as shown in Figs. 11-13.



Fig. 11

Click 'Edit' to load the 'Dialing Patterns' screen.



Fig. 12

Then click 'Ok'.

Now, you will need to enter the 'User Name' and 'Password' as shown in Fig. 13



Fig. 13

Click 'Connect' now. The following screens follow..



Fig. 14

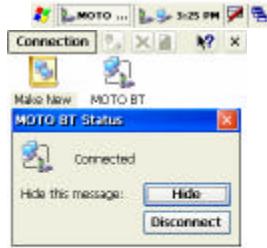


Fig. 15

### III.

Next, load 'TopSURV' and load 'Survey Config'.  
Choose 'Virtual Port – Port A' as in Fig. 20.



**Survey** Finish Cancel

Name: My Network DGPS

Type: Network DGPS

Corrections: VRS

Enable PP Survey

Next >>

Fig. 16

**Rover Recvr** Finish Cancel

Elevation Mask: 5 deg

Protocol: NTRIP

<< Back Next >>

Fig. 17

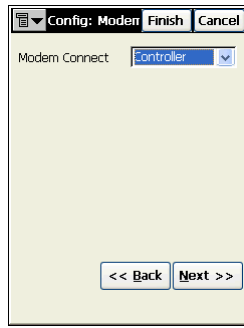


Fig. 18

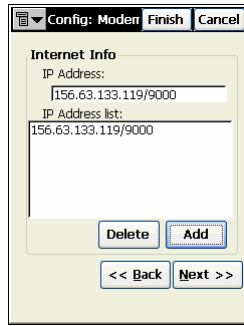


Fig. 19

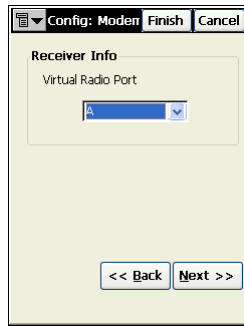


Fig. 20

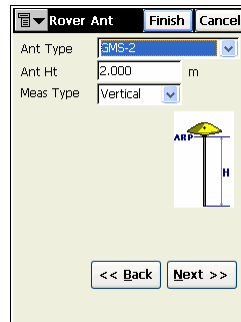


Fig. 21

Click 'Ok' to complete 'Survey Configuration'. The program should connect to the internal receiver, and make the connection sound.  
Load 'Status' dialog from the 'Survey' menu.  
Next load 'Config Modem' dialog from the top left menu icon on the 'Survey' screen.

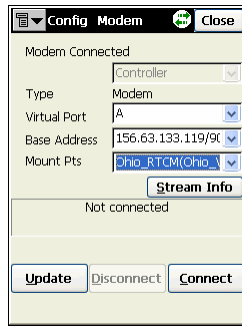


Fig. 22

Please note the icon on the title bar which displays 'green arrows'. The color green indicates that the internet connection is active. Otherwise, the arrows would be red in color.

Click 'Stream Info' to load the list of 'Mount Points'. Choose the desired Mount Point from the list, and click 'Connect'.

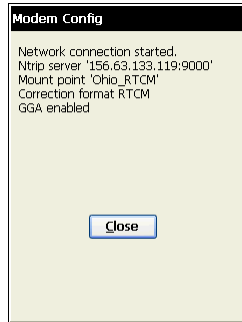


Fig. 23

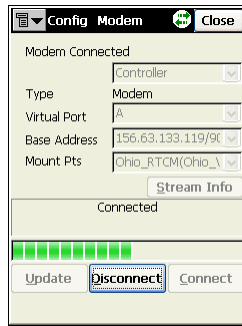


Fig. 24

The progress bar indicates that DGPS corrections are being received. In a few minutes, you should be able to see a 'radio link' and 'DGPS' positions in 'Survey Status'.

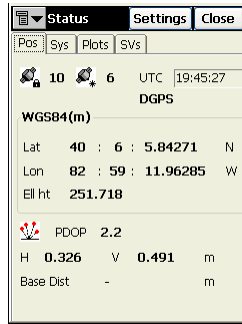


Fig. 25